

1 Materiale necessario

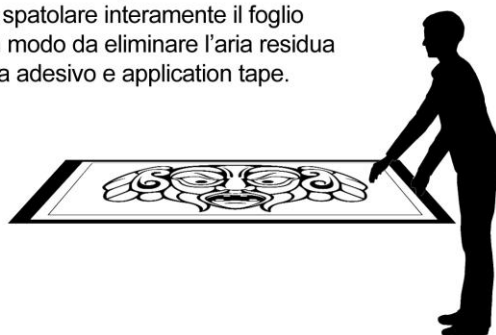
Oggetti consigliati per l'applicazione



- (A) - Nastro adesivo o di carta
- (B) - Prodotto spray per detergere
- (C) - Paletta di plastica o cartone piegato
- (D) - Forbice
- (E) - Panno / Chiffon o tela morbida

2 Preparazione e controllo

Srotolare il foglio stendendolo in orizzontale e spatolare interamente il foglio in modo da eliminare l'aria residua tra adesivo e application tape.



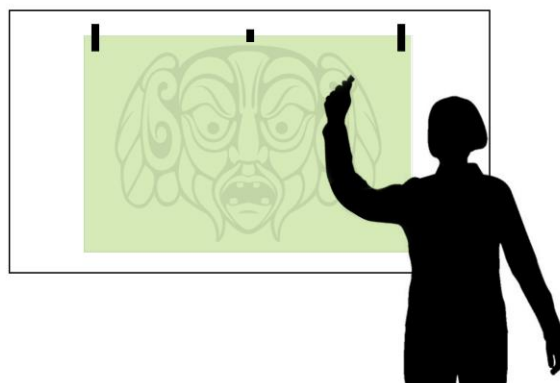
3 Preparazione superficie

Pulire accuratamente la superficie scelta



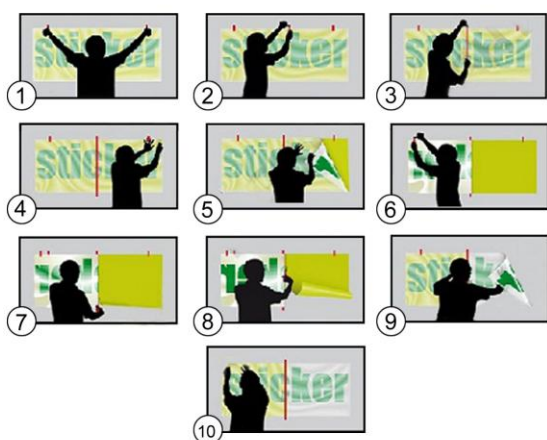
4 Fissaggio

Fissare lo Sticker con Nastro al centro e ai lati.



5 Applicazione e spellicolamento

Tutto in 10 passaggi per la corretta applicazione



6 Rimozione application tape

Togliere quindi la pellicola delicatamente



Problemi in fase di Applicazione? Chiamaci
CALL CENTER SMART&NICE

199.203.407

1 Necessary Material

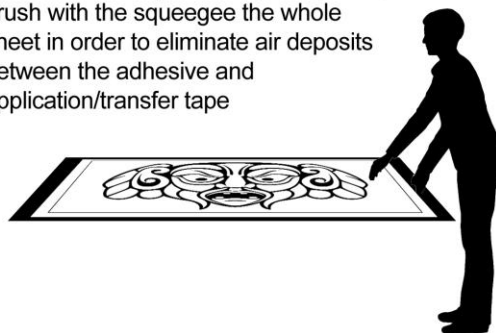
Suggested instruments for the application



- (A) - Adhesive tape
- (B) - Cleaner detergent
- (C) - Plastic squeegee or a folded carton piece
- (D) - Scissors
- (E) - Drape / Chiffon or soft weave

2 Checkup and Startup Preparation

Unroll the sticker, unwinding it in plane position and brush with the squeegee the whole sheet in order to eliminate air deposits between the adhesive and application/transfer tape



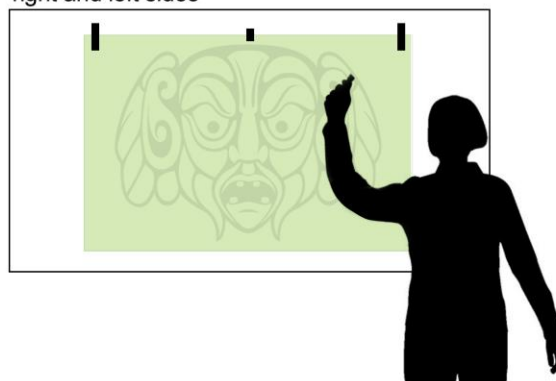
3 Wall/Surface Preparation

Carefully clean the chosen surface of application



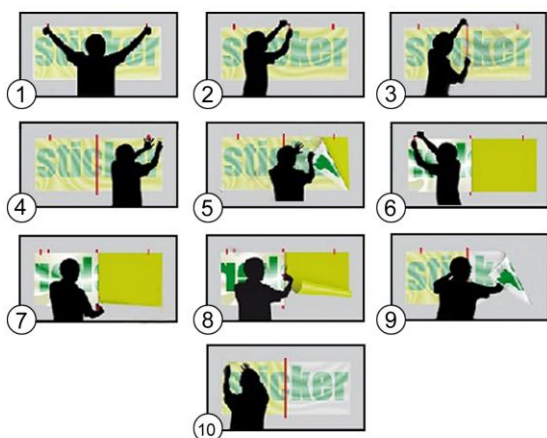
4 Fixing

Fix the sticker with the Adhesive tape in the middle, right and left sides



5 Application

10 easy steps for the correct application of the sticker



6 Application/Transfer tape removing

Carefully and slowly pull the transparent Application/Transfer tape



Troubles or doubts during the Sticker installation? Call us
CALL CENTER SMART&NICE

+39 (0)423.91.54.99